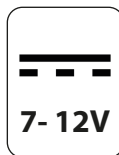
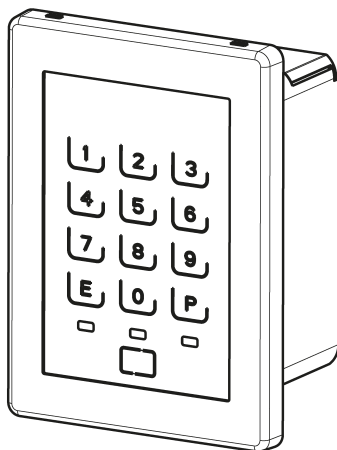


99.779 (Battery)

99.780 (Mains power)



BLUETOOTH KEYPAD / TAG



GENERAL INSTRUCTIONS

This manual is intended for technically qualified and trained installers.

Mottura Serrature di Sicurezza S.p.A. thanks you for choosing this product and reminds you:

- To read these instructions very carefully before installing this product and before doing any maintenance.
- That all assembly and connection procedures must follow good practice procedures and comply with current laws and standards.
- To NOT install this product in explosive rooms or atmospheres or in the presence of inflammable fumes/gases.
- DO NOT install this product on a door with risk of contact with water or atmospheric agents unless the door is adequately protected.
- To switch off the power supply and disconnect all live parts before doing any installation or maintenance work on the product. To take all possible precautions to eliminate the risk of electrical shock when performing installation or maintenance procedures described in this manual.
- That the installer must deliver these instructions and all of the maintenance instructions to the user.
- To keep these instructions for future reference and attach the sales receipt to validate the warranty.
- To contact authorized dealers only in case of problems.

Mottura Serrature di Sicurezza S.p.A. may change the characteristics of the products described in these instructions at any time and without notice.

WARRANTY TERMS

This product has been inspected by Mottura Serrature di Sicurezza S.p.A. and is guaranteed to be free of all manufacturing defects for the time specified by current Italian law, starting on the date of purchase indicated on the sales receipt. The warranty is in force if the sales receipt, showing details identifying the product, is exhibited to customer service personnel. The warranty covers the replacement or repair of parts found defective at origin due to manufacturing defects. Costs of shipping to and from service centres will be paid by the customer. In case of repeated malfunctions of the same type or unreparable defects, Mottura Serrature di Sicurezza S.p.A. may, at its own discretion, replace the entire product.

The warranty on the replaced product will continue until expiration of the original warranty. If service work must be performed at the customer's premises, the customer shall – if requested – pay the authorised technical personnel travel expenses.

Risks related to product transportation shall be covered by the customer when shipped directly by the customer, and by the authorised technician when the product is picked up and shipped by the technician

LIMITS OF LIABILITY

The warranty does not cover damage deriving from:

- Negligence, carelessness or use in any manner not described in these instructions
- Failure to protect the device before doing any procedure that may generate scrap or waste (welding, drilling of panels, drilling of structure, etc.) that prevents its correct functioning
- Maintenance performed in any manner not described in these instructions or by unauthorised personnel
- Transport without the necessary precautions and from any circumstances that cannot be attributed to manufacturing defects.

In addition, Mottura Serrature di Sicurezza S.p.A. declines all liability for any damage to persons or property deriving from failure to observe all of the precautions described herein.

N.B. : All electrical connections and mounting operations as well as subsequent service operations must be performed with the product DISCONNECTED from the power supply system.





WARNINGS

The device contains a short-range radio frequency transmitter in the range 2400÷2483,5 MHz using Bluetooth Low Energy (BLE) technology. The European band is documented in ERC/REC 70-03 as band type b) of the Annex 3: WIDE-BAND DATA TRANSMISSION SYSTEMS. For this band, no restrictions in the usage are foreseen in EU+EFTA countries.

All BLE units can be used ONLY if associated to XMOTO or to internal unit 99.785 dedicated to XNOVA locks.

WARNING POWER SUPPLY

-Use only good quality alkaline batteries type AA (LR6) 3 x 1,5V, same brand and production lot, pay attention to place them with the correct polarity



3x1,5V

-Do not use carbon zinc batteries type AA (R6). It is not advisable to use rechargeable batteries due to the reduced battery runtime.

-It is recommended to replace ALL the batteries together at least once per year or when the charge status is low.

MAINS POWER, connect to Mottura power adapter paying attention to the correct polarity indicated on the 7-12V serigraphy of the board housed on the rear of the unit and the details showed in the following table.

TECHNICAL DETAILS BLE UNIT

TENSION	Mains power	7 ÷ 12 V
	Battery	3 x AA (1,5 V) Alcaline batteries type LR6
MAXIMUM VOLTAGE	80 mA	
CABLE (Mains power)	Nominal section of the cables	Min: 0,32 mmq (AWG22) Max: 2 mmq (AWG14) According to IEC60332
	Length	Recommended < 4 meters
WORKING TEMPERATURE	-10 ÷ +55 °C	
MAXIMUM DISTANCE FROM DEVICE TO BE CONTROLLED	< 3 meters (in free air)	



Pursuant to article 26 of Italian Legislative Decree no. 49 of 14 March 2014 "Implementation of EU Directive 2012/19 concerning waste electrical and electronic equipment (WEEE)" and article 9 of Italian Legislative Decree no. 188 of 20 November 2008 "Implementation of EC Directive 2006/66 on batteries and accumulators and waste batteries and accumulators" adequate waste sorting for subsequent sending of disposed equipment to recycling, treatment and environmentally compatible disposal contributes to avoiding possible negative effects on the environment and human health and promotes reuse and/or recycling of the materials composing the equipment. Unlawful disposal of the product by the user may result in the application of penalties pursuant to current laws and regulations on the matter. We remind that batteries and power adapters, if present, must be removed before the device is disposed. Batteries and adapters must be collected and separately disposed.



CONFIGURATION OF X TECHNOLOGY PRODUCTS

XDIGIT 



XTRACK 



XMOTO



Internal Unit
XNova 99785 



XNOVA



MULIXE

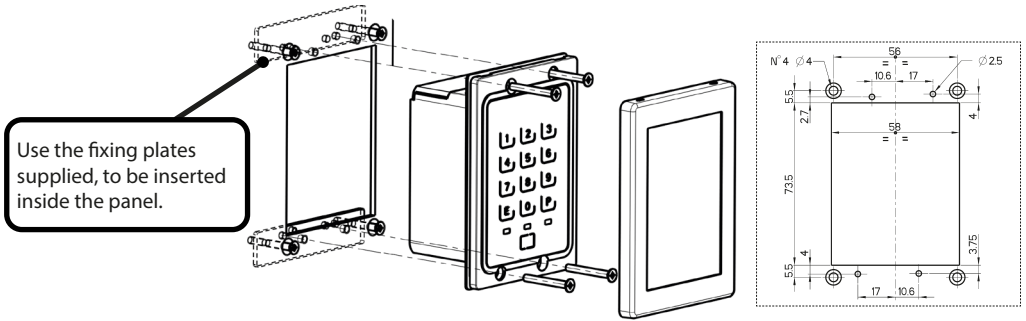


Mottura App,
designed to easily
manage all your
electromechanical
devices.

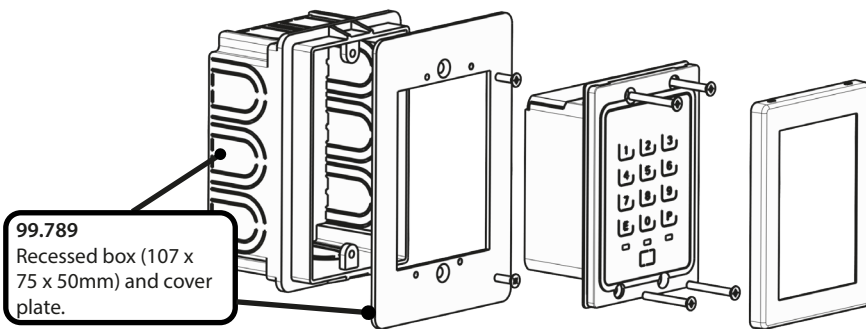


INSTALLATION

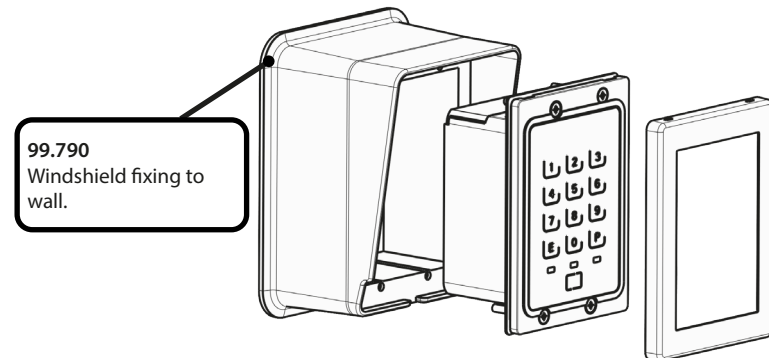
Recessed in the panel



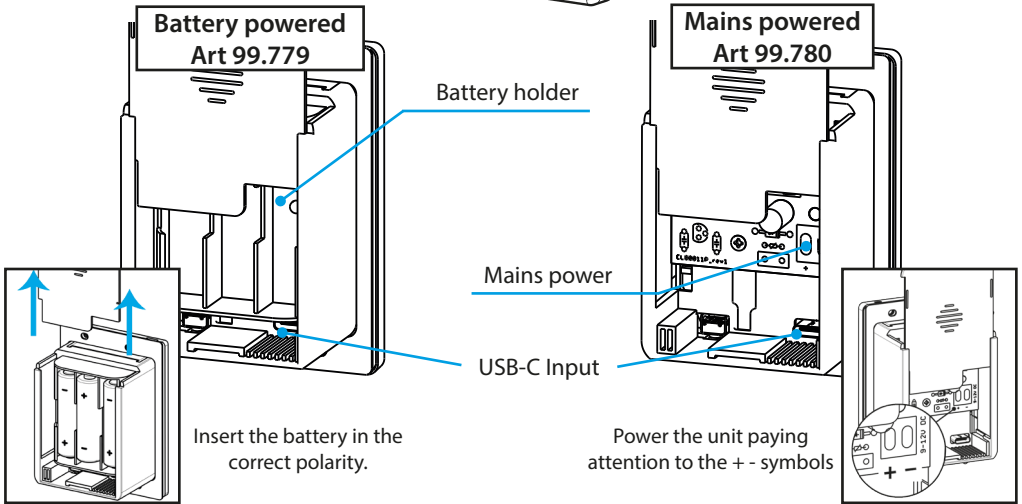
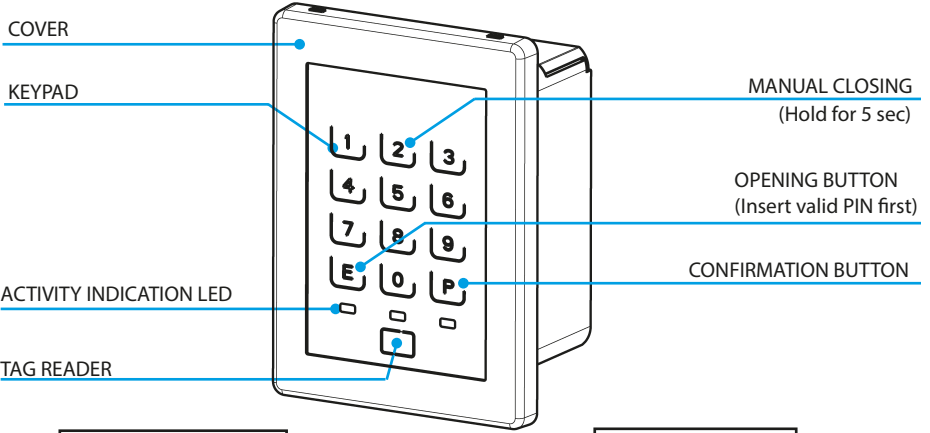
In wall



Fixing to wall

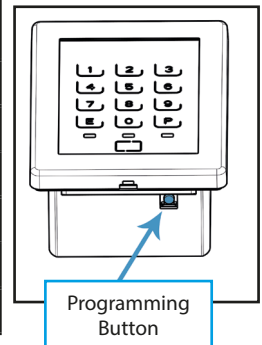


THE UNIT (SEE WARNINGS PAGE 2)

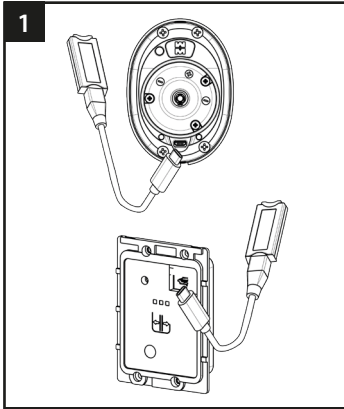


PROGRAMMING BUTTON

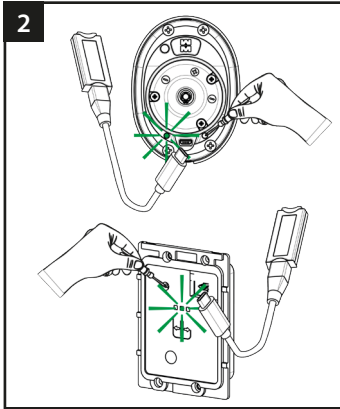
TIME (sec)	LED	FUNCTION	ACTIVATION REQUIRED
0 ÷ 3	Green	Pairing (with device)	
3 ÷ 6	Red	Software Reset BLE	
6 ÷ 9	Yellow	Factory reset BLE	
9 ÷ 10		None (Wait)	
11 ÷ 14	Red/Yellow	Software Reset MCU	x
14 ÷ 17	Green/Red	Factory reset (MCU e BLE)	x



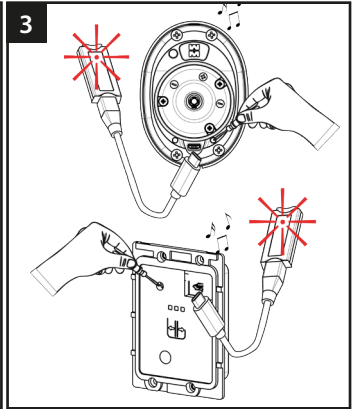
PAIRING PROCEDURE with XMOTO or 99.785 unit



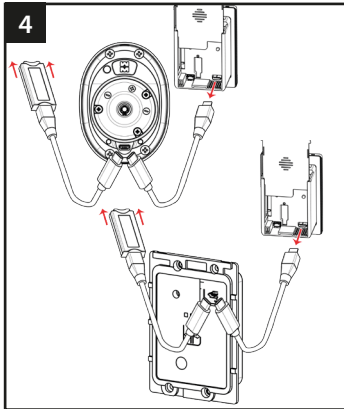
1 Connect the master key to the lock or escutcheon.



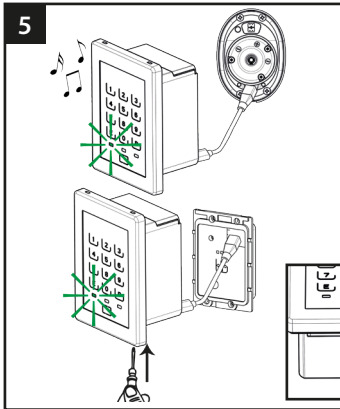
2 Press the programming button (3÷6 sec. max) until GREEN led on steady. Release and the GREEN is now flashing.



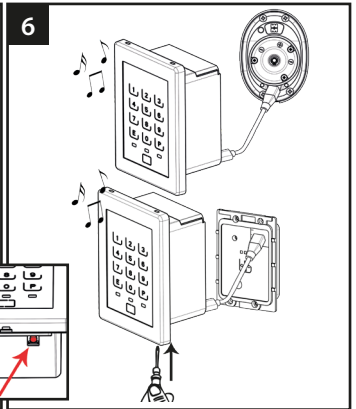
3 Press again the programming button. On the master key, the RED led will flash and at the end the lock will ring with increasing tone.



4 Disconnect the master key from the cable and connect to the unit on the USB-C connector.



5 Within 20 seconds, press the programming button on the unit until the led is not steady GREEN. Release the button and the led is flashing GREEN.

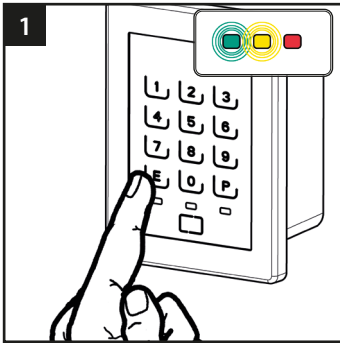


6 Press again the button until a beep is playing on the unit, indicating the start of the sequence. 3 beeps at short distance and an increasing tone first on the lock and then on the unit show the end of the procedure, which should take 30-40 seconds.

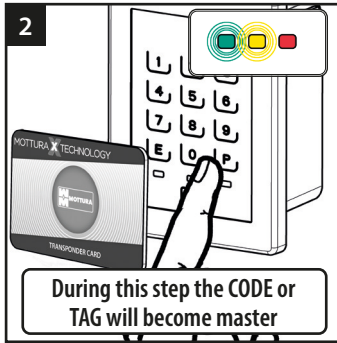
First Programming



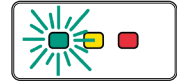
NO CREDENTIAL ARE STORED THE FIRST TIME YOU ENTER THE PROGRAMMING



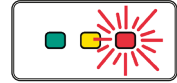
Press any button to activate the unit. Then press E.



During this step the CODE or TAG will become master



If the code is confirmed the GREEN light will flash.



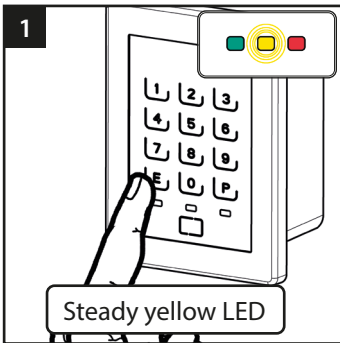
If the code is NOT confirmed, the RED light will flash exiting from programming.

Uscita automatica da programmazione

N.B. From this moment the unit has its first master credential which allows the next access to programming, the warning of credential failure disappears and you can open the lock authenticated with the unit.

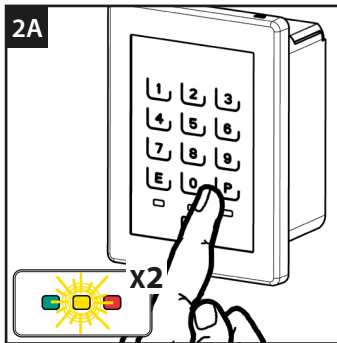
Entering service CODE / TAG

! Press any key to activate the unit !

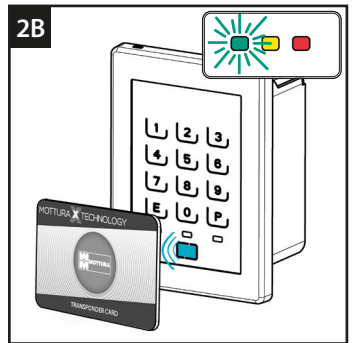


Steady yellow LED

Activate the unit. To enter in programming press E, enter the master code confirming with E or show a master TAG.



Digit a code for service and press P, a double flash YELLOW will indicate to enter the same code and press P.



Show the unknown TAG to the reader, the GREEN flash will indicate the correct procedure.



x2 already stored as MASTER.



x3 already stored as SERVICE.

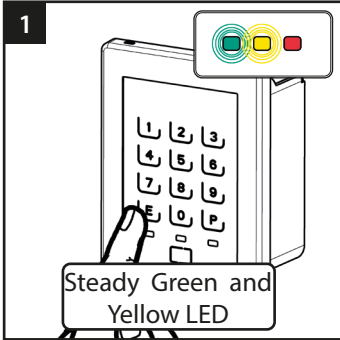


x4 Memory full

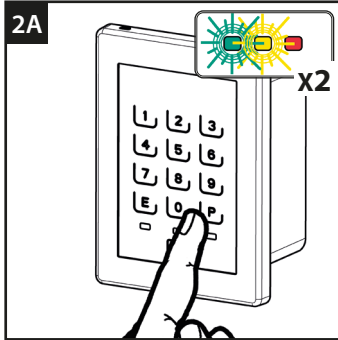
TO EXIT WAIT FOR TIMEOUT (10 sec.) OR PRESS E 5 TIMES

Insert MASTER code / TAG

! Press any key to activate the unit !






Activate the unit. Press E, digit the master code confirming with E or show the master TAG. Press E once to enter the menu.



Digit a code which become master and press P, a double flash YELLOW and GREEN will indicate to re-digit the same code and press P.



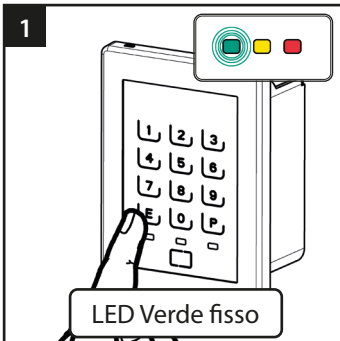
To add a TAG, show the unknown TAG to the reader, a GREEN flash confirms the operation.

 x2 already stored as MASTER.
  x3 already stored as SERVICE.
  x4 Memory full

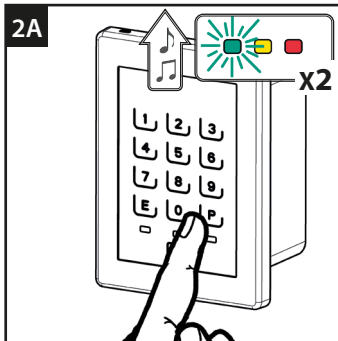
TO EXIT WAIT FOR TIMEOUT (10 sec.) OR PRESS 4 TIMES E.

Deleting a single Code / TAG

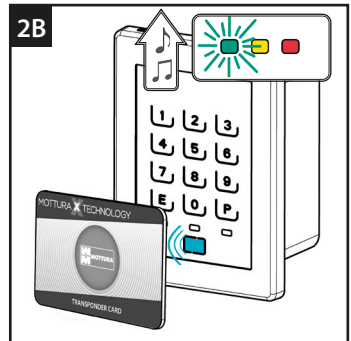
! Press any key to activate the unit !



Activate the unit. Press E, digit the master code confirming with E or show a master TAG. Press E twice to enter the menu.



Digit the code to be deleted and press P, a sound and GREEN flash indicates the cancellation of the code. RED indicates that the operation has failed.



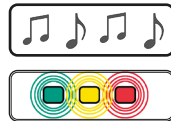
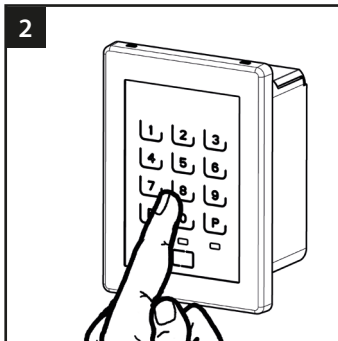
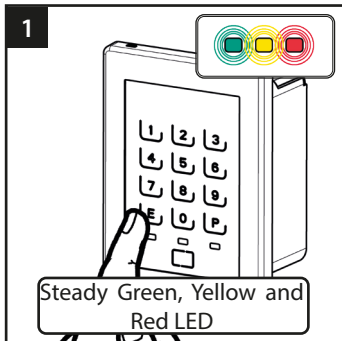
Show the TAG to be deleted to the reader, a GREEN flash confirms the operation. RED indicates that the operations has failed.

N.B. If you try to delete the master CODE / TAG used for programming, the operation will fail, otherwise the credential will be deleted either if master or service.

TO EXIT WAIT FOR TIMEOUT (10 sec.) OR PRESS E 3 TIMES

Deleting all CODES / TAGS

! Press any key to activate the unit !



Deletion needs time, a continuous SOUNDS will warn about deletion and LEDs are switched on to delete the codes. Automatic exit from programming

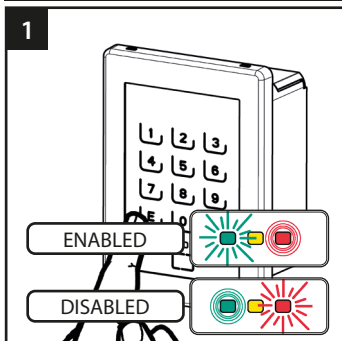
Activate the unit. Press **E**, digit the master code confirming with **E** or show a master TAG. Press **E** 3 times to enter the menu.

Digit the code **987P** to delete ALL NUMERIC CODES.
Digit the code **789P** to delete ALL TAGS.

N.B. If during the operation all master credential are deleted, also the service credential will be deleted

Enable/Disable the service credentials

! Press any key to activate the unit !



Digit the code **123P** to **ENABLE**



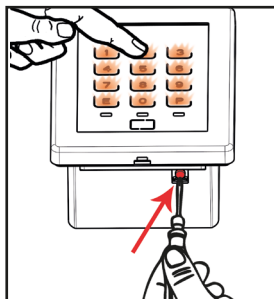
Digit the code **321P** to **DISABLE**



To exit wait for timeout (10 sec.) or press **E**.

Activate the unit. Press **E**, digit the master code confirming with **E** or show a master TAG. Press **E** 4 times to enter the menu.

! FACTORY RESET !



Keep pressed the programming button with a dedicated tool (screwdriver) and activate the unit pressing any other key.

The following LED will switch on in sequence:

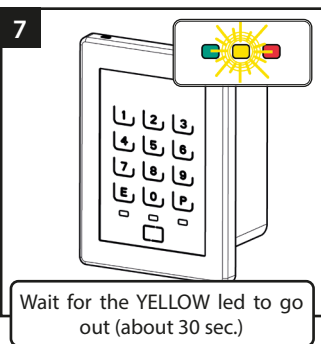
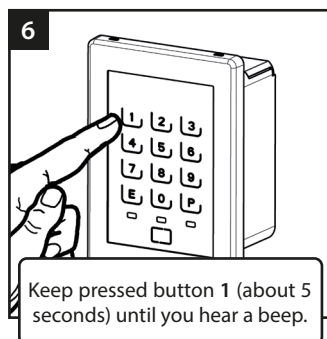
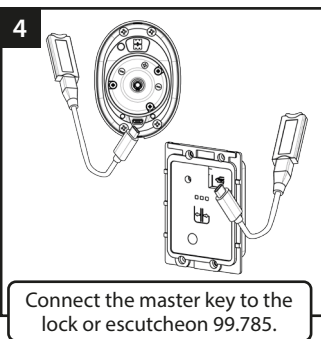
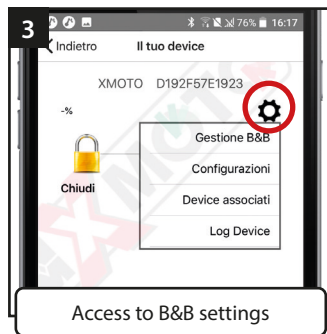


Release the programming button, the Green and Red LED will flash, press the button to confirm.

The operation of deletion of all the codes can take until 10 seconds. At the end of the operation all LED will switch off.

B&B PROGRAMMING

ACTIVATION B&B MODE



NOTE

The activation of the unit must be performed only the first time that the B&B mode is activated, subsequently the unit will update every 12 hours with XMOTO.

N.B.
To activate B&B mode it is always necessary to connect the master key to the knob or escutcheon 99.785. For each XMOTO or Escutcheon 99.785 it is possible to have only one administrator in B&B mode. The activation of the B&B mode using the master key of another device will exclude the previous administrator.

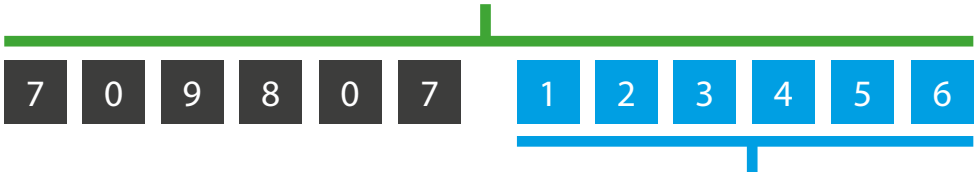
USING THE ACCESS CODE

It is possible to activate an access code valid for a limited time in the following way:

THE MANAGER OF THE LOCK WILL SEND A 12-DIGIT CODE (BY EMAIL, SMS OR OTHER)

Code for FIRST access to B&B

(Valid for 24h from beginning of the selected time, to insert only the FIRST time)



Daily opening code
(To be used for the full time)

N.B.

The entire 12-digit code will be needed only to activate the selected time via ULIXE App and must be used **ONLY** the first time within 24h from start of validation. The last 6 digits code in blue is the daily code and must be used **AFTER** the first entrance in the B&B.

TABLE OF ERROR REPORTS

SOUND	LIGHT	FAILURE	DESCRIPTION	NOTE
2 long decreasing notes x 3 times.	YELLOW FLASHING.	Low battery	Batteries are low.	Replace batteries as soon as possible.
2 short decreasing notes x 5 times.	RED FLASHING.	Dead battery	Batteries are fully dead.	Replace batteries immediately.
2 short decreasing notes x 10 times.	RED FLASHING.	Exhausted battery	Batteries are not able to power the device.	

